

# Split Core Current Transformer



Shenzhen Sensor Electronic  
Technology Co.,Ltd

## CE-IJCT-24-G

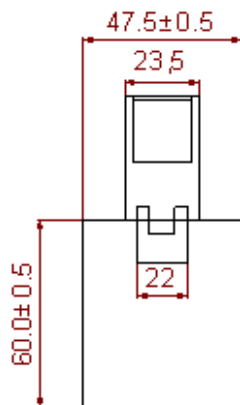
Output: 83.3mA, 100mA, 5A optional

Aperture: F 25.5mm; Accuracy: 1~2%

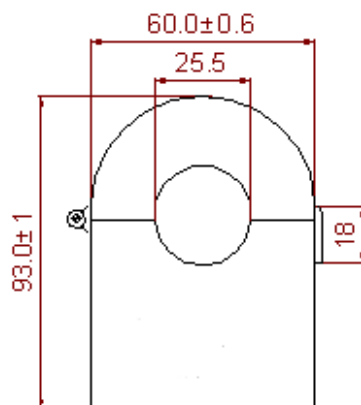
### Specifications

Operating temperature:	-40~85℃
Primary Current (Amp.)50/60Hz:	150A~500A
Accuracy @ $R_L \leq 10\Omega$ :	Class 1~2%
Turns ratio:	1:30,1:40,1:60,1:80,1:100,1:2000; 1:3000 optional
Dielectric Withstanding Voltage (Hi-pot):	3kV/1mA/1min
Insulation Resistance:	DC500V/100M $\Omega$ min
Opening Angle:	180 degree

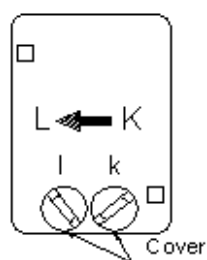
### Dimensions



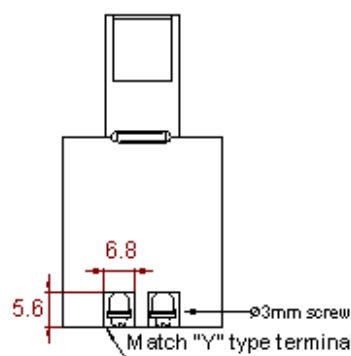
Front View



Left View



Bottom View



### Test Circuit:

