

Split Core Current Transformer



Shenzhen Sensor Electronic
Technology Co.,Ltd

CE-IJCT-24-F

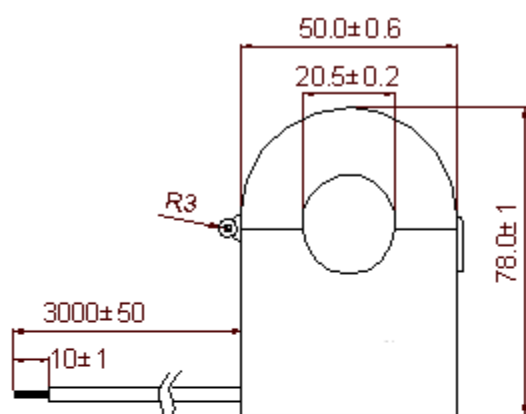
Output: 66.6mA, 75mA, 5A optional

Aperture: F 20.5mm; Accuracy: 1~2%

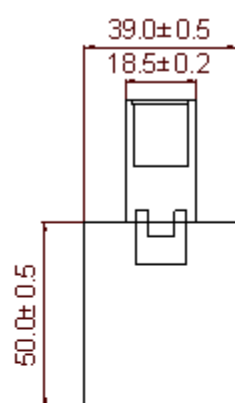
Specifications

Operating temperature:	-40~85℃
Primary Current (Amp.)50/60Hz:	150A~300A
Accuracy @ $R_L \leq 10\Omega$:	Class 1~2%
Turns ratio:	1:30,1:40,1:50,1:60,1:2000; 1:3000 optional
Dielectric Withstanding Voltage (Hi-pot):	4kV/1mA/1min
Insulation Resistance:	DC500V/100M Ω min
Opening Angle:	180 degree

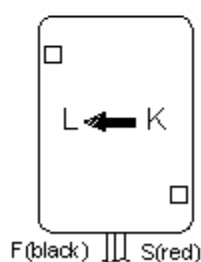
Dimensions



Front view



Right view



Bottom view



Test Circuit:

